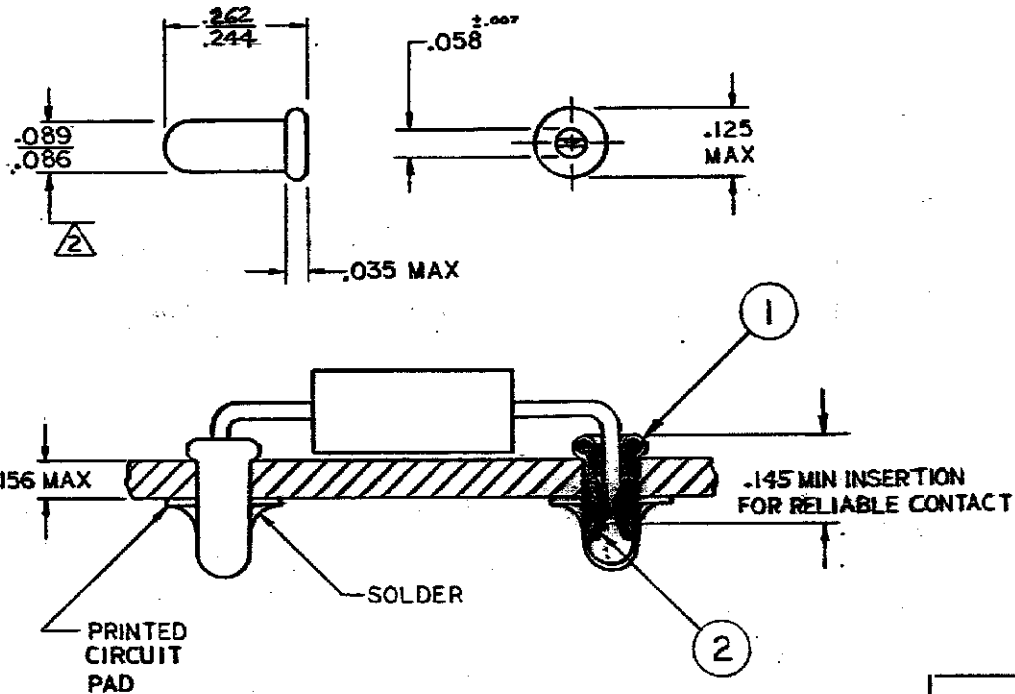


DRAWING MADE IN THIRD ANGLE PROJECTION

© COPYRIGHT 1966 BY AMP INCORPORATED, HARRISBURG, PA.
 ALL INTERNATIONAL RIGHTS RESERVED, AMP INCORPORATED PRODUCTS
 COVERED BY U. S. AND FOREIGN PATENTS AND/OR PATENTS PENDING.


| | | REVISIONS | | | | |
|----------------|----|-----------|-----|---------------------------------|----------|----------|
| REV | BY | ZONE | LTR | DESCRIPTION | DATE | APPROVED |
| J | ✓ | | | REDRAWN W/O CHNG M-5090 | 4-25-78 | D.H. |
| K | ✓ | | | REV, ADDED I--1, M-5182, M-5230 | 3/23/79 | DAS/D.H. |
| L | ✓ | | | REV. NOTE 2 M-5446 | 3/10/79 | PAS/D.H. |
| L ₁ | ✓ | | | RESTORATION | 4-24-80 | ESB/CY |
| M | ✓ | | | REV AG 1047 LOC TO CY | 12-22-81 | SDM |
| M ₁ | ✓ | | | REV PER AG-5173 | 4-12-82 | VS |
| N | ✓ | | | REV PER AG-5123 | 5-10-82 | RTD |



1 ACCEPTS .036-.054 DIA PIN.

2 FITS INTO NO. 43 DRILLED HOLE (.0890 ± .0015) FOR HAND INSERTION OR NO. 44 DRILLED HOLE (.0860 ± .0015) FOR MACHINE INSERTION

| ITEM No. | DESCRIPTION | MATERIAL & FINISH | PART NO |
|----------|-------------|-------------------|------------|
| 1 | CUP | COPPER, TIN-LEAD | 1-380758-1 |
| 2 | SPRING | BE. CU, GOLD | |
| 1 | CUP | COPPER, TIN-LEAD | 1-380758-0 |
| 2 | SPRING | BE. CU, TIN | |

| | | | | |
|---|-----------------|---|-------------------------------|------------|
| UNLESS OTHERWISE SPECIFIED DIMENSIONS ARE IN INCHES. TOLERANCES ON: DECIMALS ±.015 ANGLES ± | CONTRACT NO |  AMP INCORPORATED Harrisburg, Pa. | | |
| | DR 4-25-78 D.H. | | | |
| | MATERIAL | NAME | REUSABLE COMPONENT RECEPTACLE | |
| | SEE TABLE | SIZE | CODE IDENT NO | DRAWING NO |
| FINISH | OTHER APPD | B | 00779 | 380758 |
| SEE TABLE | | SCALE | SHEET | |